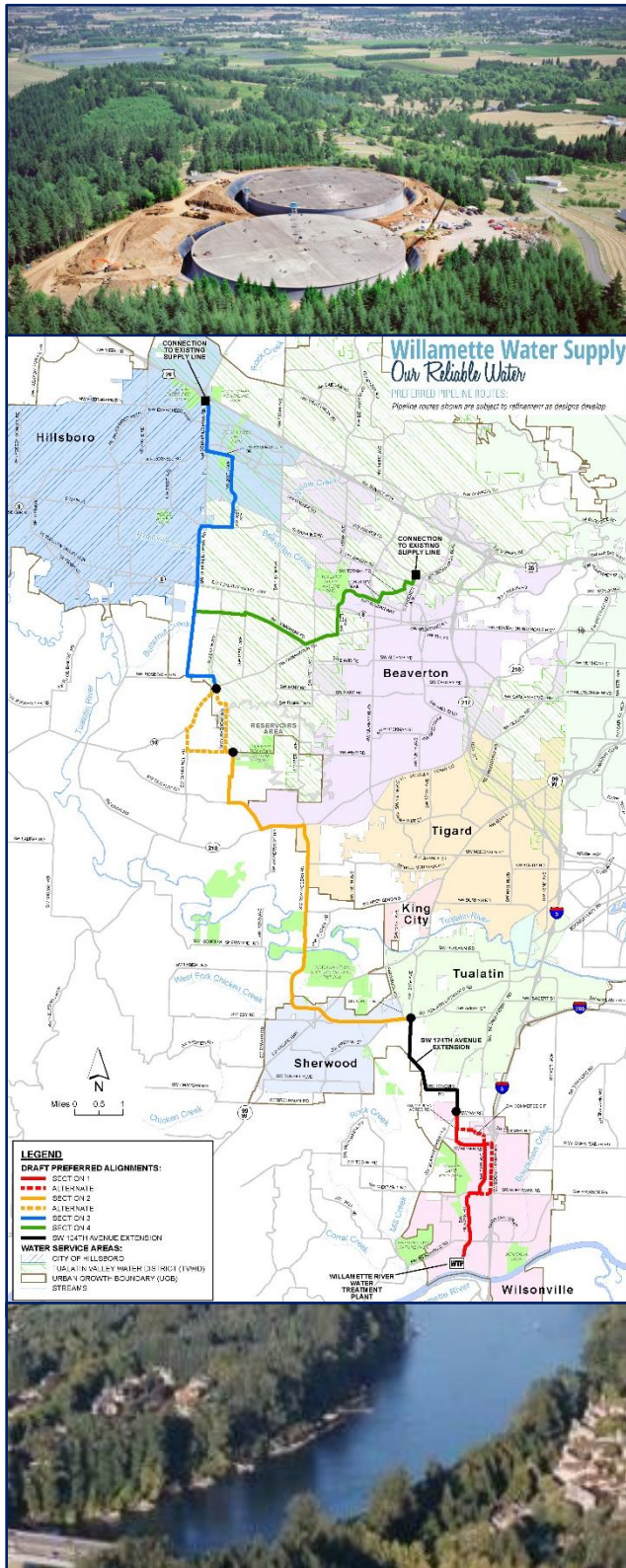


Environmental Due Diligence

Willamette Water Supply Project

Washington and Clackamas Counties, Oregon



*environmental due diligence
Phase I and II ESAs
hazardous materials corridor studies
site transaction screenings*

Terraphase, as a subconsultant to David Evans and Associates, provides Phase I ESA and Hazardous Materials Corridor Study Services to the Tualatin Valley Water District and the Cities of Hillsboro and Beaverton along the proposed alignment of the Willamette Water Supply Project (WWSP) pipeline. The pipeline is being designed and permitted to deliver drinking water from the Willamette River to the Cities of Hillsboro and Beaverton.

Environmental due diligence activities are being conducted along a 35-mile corridor to evaluate the proposed alignment for potential hazardous conditions that might be encountered during construction, so that areas of contamination can be managed to limit exposure, soil and groundwater waste can be correctly handled, and liability and project costs can be controlled. In areas where adverse impact is severe, an evaluation of localized alternative alignments can be made.

Due diligence activities include:

- Phase I ESAs,
- Transaction Screenings, and
- Hazardous Materials Corridor Studies (HMCSs).

The first phase of the project involved review and re-categorization of 57 recognized environmental conditions (RECs) that were identified during a previous ESA along the alignment. A subsequent phase involved a preliminary evaluation of environmental conditions likely to be encountered at over 100 locations along alternative corridor alignments. Based on these analyses, sites of high-likelihood of potential adverse impact to the corridor were selected for further assessment using soil and groundwater sampling methodologies.